



Community Resiliency Initiative: Planning for Sea Level Rise

Sean Reiss, *Bureau of Community Planning*



September 23, 2016

Community Resiliency Initiative Goals

Working to help local governments:



- Understand current and future flood risk and identify areas at risk
- Examine policy options and tools for integrating coastal resiliency into existing planning processes
- Implement statutory language
- Share the results and lessons learned

What We Are Doing

- Building partnerships: statewide focus group and state agency sub-group
- Developing guidance materials:
 - Technical assistance
 - Integrating adaptation into current planning and development processes
- Pilot projects: Adaptation Action Areas (AAA) Project of Special Merit and three adaptation pilot communities

Adaptation Pilot Projects

Pilot projects demonstrate planning options available to local governments

- How can we assess vulnerability to current and future coastal flooding?
- How can we design and implement adaptation policies?

Adaptation Pilot Projects

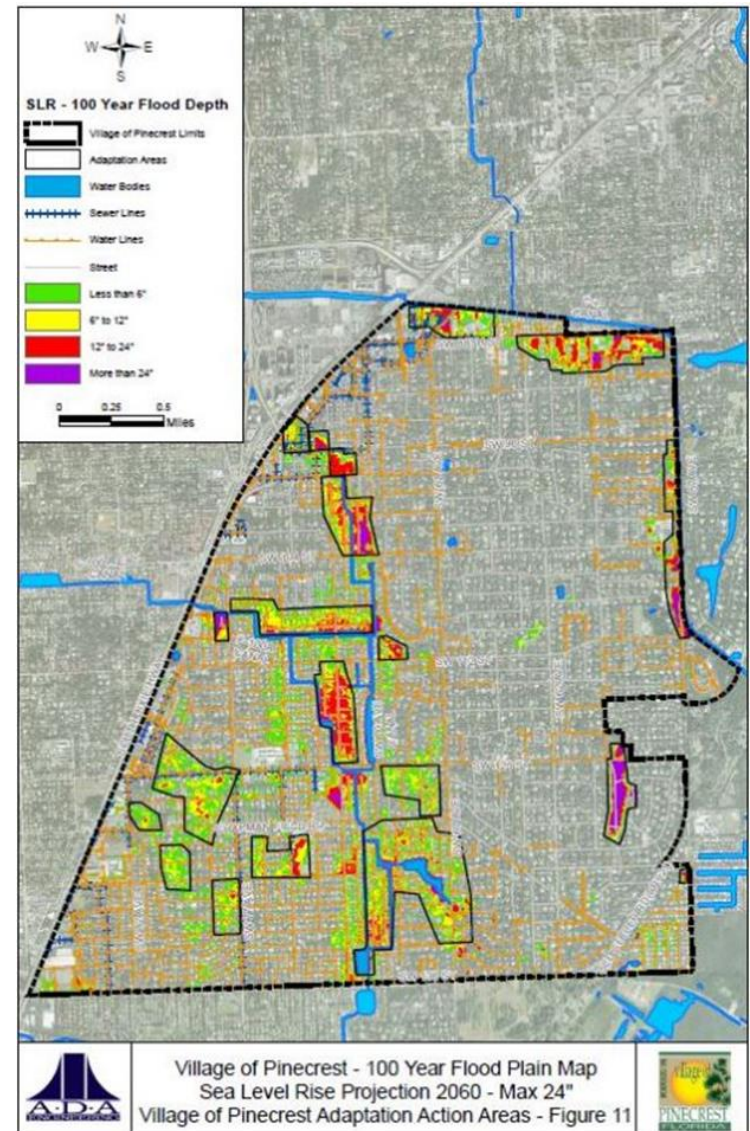
Past: Adaptation Action Areas Project of Special Merit - Fort Lauderdale & Broward County

Current: Three Adaptation Pilot Local Governments

- City of Clearwater
- Escambia County
- City of St. Augustine

Policy Tool: Adaptation Action Areas

- Significant flexibility in how a local government can develop and implement AAAs
- Optional designation for areas experiencing or are vulnerable to current and future coastal flooding, Florida Statutes 163.3164.1 and 163.3177.6.g.10
- Framework for adaptation planning and prioritizing infrastructure investments



Policy Tool: Adaptation Action Areas

AAA identifies one or more areas that:

- Experience coastal flooding due to extreme high tides and storm surge
- Are vulnerable to the related impacts of rising sea levels

Criteria for the AAA may include, but need not be limited to areas for which:

- Land elevations are below, at, or near mean higher high water
- Have a hydrologic connection to coastal waters
- Are designated as evacuation zones for storm surge

Policy Tool: Adaptation Action Areas

- Addresses coastal adaptation in the comprehensive plan and paves the way for integration with related plans and implementation processes:
 - Capital Improvements Plan
 - Local Mitigation Strategy
 - Stormwater Management Plan
 - Visioning processes and strategic plans

Adaptation Action Areas

- AAAs designated in Florida:
 - Broward County
 - City of Fort Lauderdale
 - City of Satellite Beach
 - Town of Yankeetown
 - Village of Pinecrest
- Proposed, pending adoption:
 - Town of Cutler Bay
 - City of Miami Beach

Fort Lauderdale AAA Pilot

- Fort Lauderdale pilot = case study of outreach, incrementalism, and integration
- Project of Special Merit timeline: 2011-2014
- Partnership between DEO, South Florida Regional Council, City of Fort Lauderdale, and Broward County



Photo Credit: City of Fort Lauderdale

Fort Lauderdale AAA Pilot

- Built into the City Vision Plan's “We Are Ready” Directive
- Community outreach and dialogue was foundational to the visioning effort and AAA effort
 - Forming relationships and building understanding/trust
 - Focused on the present issue
 - “We are a resilient and safe coastal community” – How can we ensure we stay that way?



Photo Credit:
City of Fort
Lauderdale

Fort Lauderdale AAA Pilot

AAA Goal: “Increase the City’s resiliency to the impacts of climate change and rising sea levels by developing and implementing adaptation strategies and measures in order to protect human life, natural systems and resources and adapt public infrastructure, services, and public and private property.”

Example AAA policies:

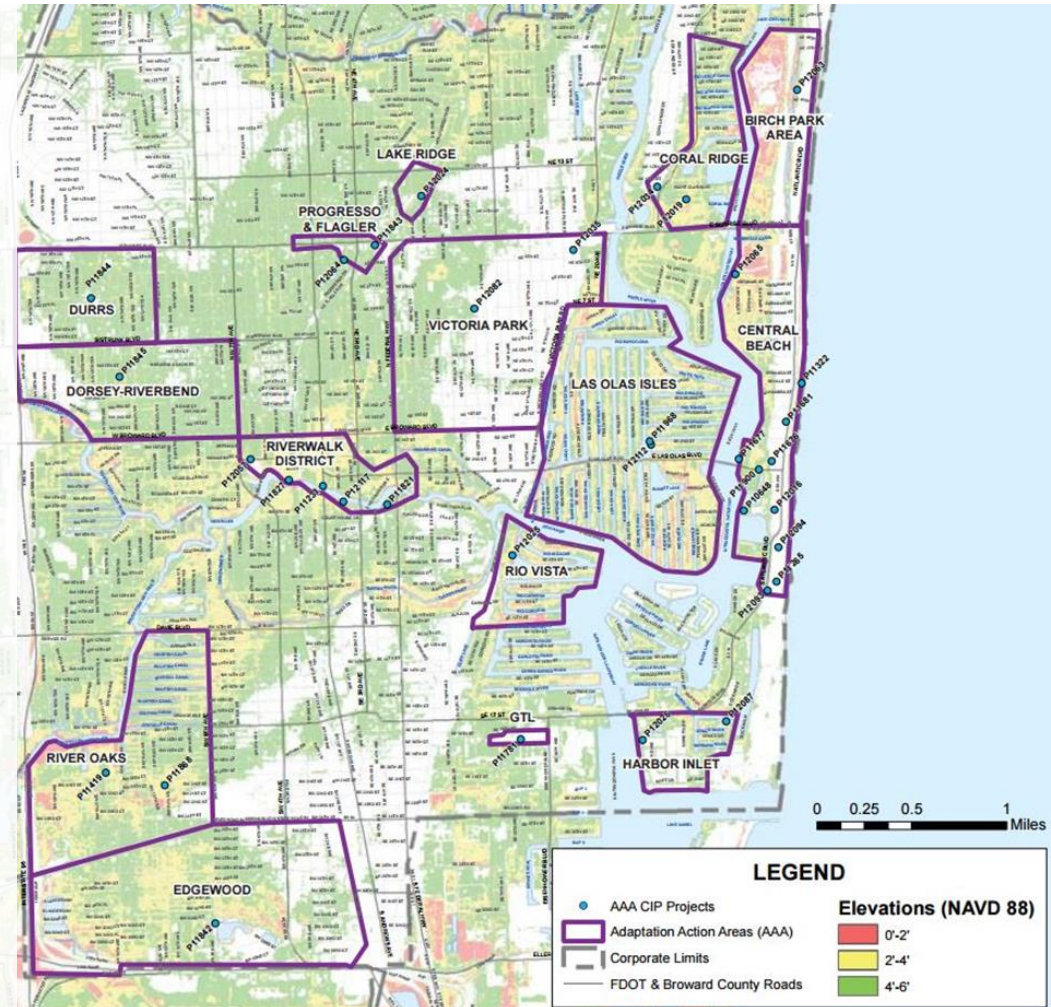
- Identify at-risk public infrastructure and investments
- Considerations, basis, and mechanisms for AAA designations and funding
- Integration of AAAs into existing city processes and plans
- Allow for flexible adjustments
- Alignment with national, state, and regional adaptation strategy documents

Fort Lauderdale AAA Pilot

Designated 16 AAAs
and 38 projects for
funding in the City's
Community Investment
Plan (CIP)

Focused on action:

- Took existing CIP projects and budgeted them as adaptation projects
- Projects include stormwater and seawall improvements



Fort Lauderdale AAA Pilot

Ingredients for success:

- Supportive leadership
- Clear, consistent, and transparent communication
 - “speak with the community early and often”
- Be attentive and responsive to signals for how fast or slow people are willing to go
- Focus on what we are already doing to be resilient
 - “We Are Ready” to handle this challenge
 - Incremental process for building community capacity for future efforts
- Flexible policy language
 - Non-prescriptive so it is adaptable over time

Fort Lauderdale AAA Pilot Resources

- Adaptation Action Areas Guidebook: A Planning Guidebook for Florida's Local Governments
- Adaptation Action Areas: Policy Options for Adaptive Planning For Rising Sea Levels
- Adaptation Action Area Short Film, 2014
- Adaptation Action Area Podcast Shorts, 2014 (DEOFL YouTube Channel):
 - Broward County Emergency Management Director, Miguel Ascarrunz
 - City of Fort Lauderdale Budget Manager, Emilie Smith
 - City of Fort Lauderdale City Manager, Lee R. Feldman
 - City of Fort Lauderdale Mayor, John P. "Jack" Seiler
 - City of Fort Lauderdale Public Works Director, Hardeep Anand



Thank You.

If you have questions or comments about this presentation or need to discuss a future project; please contact our office.

<http://www.floridajobs.org/adaptation-planning>



Sean Reiss, Bureau of Community Planning, DEO

Main Line: 850-717-8511

Email: *Sean.Reiss@deo.myflorida.com*